

SCOTT, MODEL B-711

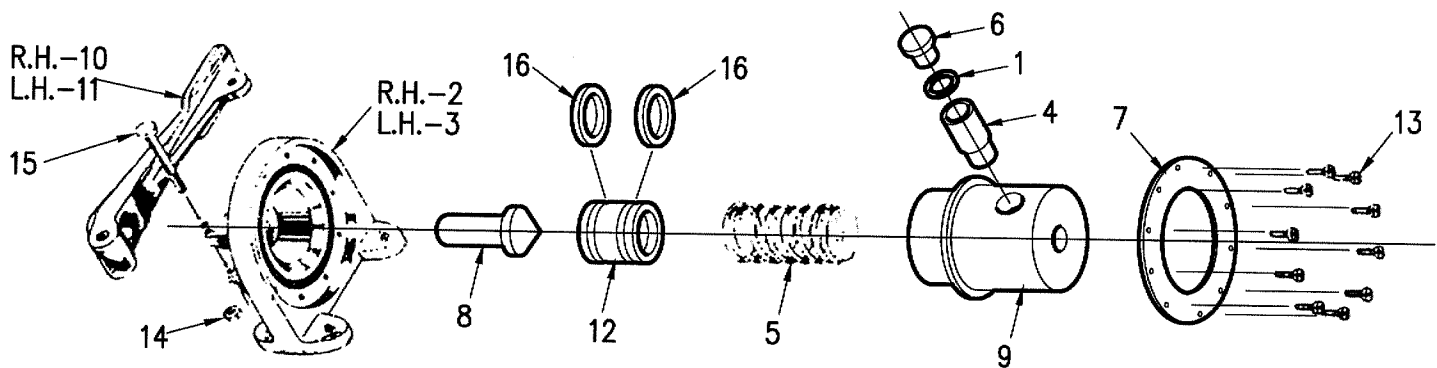
PARTS LIST

REF. NO.	PART NO.	NAME	NO. REQ.	REF. NO.	PART NO.	NAME	NO. REQ.
1	1159	GASKET-VENT SCREW	1	8	1383	PISTON	1
2	1220	BRACKET - R.H. UNIT	1	10	1712	PEDAL - R.H. UNIT	1
3	1232	BRACKET - L.H. UNIT	1	11	1714	PEDAL - L.H. UNIT	1
4*	2003	PAD-DIAPHRAGM	1	12*	1751	DIAPHRAGM	1
5	1256	SPRING	1	13	AN500-8-8	SCREW	10
6	1258	SCREW-VENT	1	14†	AN356-1032	LOCK NUT	1
7	2728	COVER-COMPRESSION	1	15†	AN3-15A	BOLT-AIRCRAFT	1

1. REMOVE AND DISCARD THE FOLLOWING SCOTT PARTS: REF. NO. 4, 5, 7, 8 AND 12.
2. FOR INSTALLATION, REFER TO PAGE 2.

- † (A) NOTE: SOME SCOTT MOD. B-711 ASSYS. MAY HAVE AN393-51 CLEVIS PIN, AN380-2-2 COTTER AND AN960-10 WASHER SUBSTITUTED FOR ITEMS 14 & 15.
- * (B) NOTE: NEWER SCOTT MODEL B-711 ASSYS. HAVE PIN 2844 DIAPHRAGM AND PIN 2003-1 DIAPHRAGM PAD.

THIS DATA IS PROPERTY OF NORTHERN AIRFRAMES, LLC. UNAUTHORIZED REPRODUCTION, TRANSFER OR POSSESSION IS PROHIBITED.		D 03-13-2008 CHANGE COMPANY NAME CJW	AS LISTED	AS LISTED	AS LISTED	AS LISTED	PER PART NO.	
TOLERANCES UNLESS OTHERWISE SPECIFIED SCALE=FULL UNDIMENSIONED= ± .015 ANGLES = ± 1° .00 = ± .030 .000 = ± .005		C 07-21-1985 CHANGE COMPANY NAME PJM	PART NO.	NO. REQ.	SIZE		DESCRIPTION	SPECIFICATION
		B 07-21-1985 ADDED NOTE PJM			MATERIAL			
BEND LINES OUTSIDE DIM. _____ BEND LINE - - - - - NOTE ALL BEND RADII ARE INSIDE UNLESS OTHERWISE NOTED.		A 07-02-1985 ADDED NOTE PJM	PAGE: 1 OF 2		FINISH: BARE			
		NO. DATE REVISIONS BY	BRAKE BOOSTER INSTAL, ASS'Y					
NORTHERN AIRFRAMES LLC. CHUGIAK, ALASKA 99587		DWG: PETER J. MAUS	CHECK: CJW	APPROVED: DICK ROBERTS JR.		DRAWING NUMBER 8400		
		DATE: 08-01-2004	DATE: 03-13-08	DATE: 03-13-2008				



MODIFIED BRAKE BOOSTER ASSEMBLY

PARTS LIST

REF. NO.	PART NO.	NAME	NO. REQ.	REF. NO.	PART NO.	NAME	NO. REQ.
1	SCOTT 1159	GASKET-VENT SCREW	1	9	8404	CYLINDER	1
2	SCOTT 1220	BRACKET - R.H. UNIT	1	10	SCOTT 1712	PEDAL - R.H. UNIT	1
3	SCOTT 1232	BRACKET - L.H. UNIT	1	11	SCOTT 1714	PEDAL - L.H. UNIT	1
4	8406	ADAPTER	1	12	8402	PISTON	1
5	8403	SPRING	1	13	AN500-8-8	SCREW	10
6	SCOTT 1258	SCREW-VENT	1	14	AN356-1032	LOCK NUT	1
7	8405	RETAINER-CYLINDER	1	15	AN3-15A	BOLT-AIRCRAFT	1
8	8401	PLUNGER	1	16	MS28775-020	"O" RING	2

INSTALLATION INSTRUCTIONS:

1. INSTALL THE FOLLOWING PARTS AS SHOWN: REFERENCE PARTS LIST NUMBER 4, 5, , 8, 9, 12 AND 16. (CAUTION) REF. NO. 5 SPRING MUST BE CENTERED AT BOTH ENDS IN THE PISTON AND CYLINDER DURING ASSEMBLY. THIS CAN BE VISIBLY CHECKED AFTER ASSEMBLY BY LOOKING THROUGH THE HOLE IN THE END OF THE CYLINDER.
2. BLEED THE BRAKE SYSTEM AND FILL THE RESERVOIR WITH MIL-H-5606 (RED FLUID).
3. CHECK THE BRAKES FOR PROPER OPERATION.
4. MAKE THE FOLLOWING LOGBOOK ENTRY: "INSTALLED NORTHERN AIRFRAMES BRAKE BOOSTER IN ACCORDANCE WITH DRAWING No. 8400 AND STC # _____, WEIGHT CHANGE NEGLIGIBLE."

THIS DATA IS PROPERTY OF NORTHERN AIRFRAMES, LLC. UNAUTHORIZED REPRODUCTION, TRANSFER OR POSSESSION IS PROHIBITED. TOLERANCES UNLESS OTHERWISE SPECIFIED SCALE=FULL UNDIMENSIONED= ± .015 ANGLES = ± 1' .00 = ± .030 .000 = ± .005	BEND LINES OUTSIDE DIM. _____ BEND LINE - - - - - NOTE ALL BEND RADII ARE INSIDE UNLESS OTHERWISE NOTED.	D 03-13-2008	CHANGE COMPANY NAME	CJW	AS LISTED	AS LISTED	AS LISTED	AS LISTED	PER PART NO.
		C 07-21-1985	CHANGE COMPANY NAME	PJM	PART NO.	NO. REQ.	SIZE	DESCRIPTION	SPECIFICATION
		B 07-21-1985	ADDED NOTE	PJM	MATERIAL				
		A 07-02-1985	ADDED NOTE	PJM	PAGE:	FINISH: BARE			
		NO.	DATE	REVISIONS	BY	BRAKE BOOSTER INSTAL, ASS'Y			
		NORTHERN AIRFRAMES LLC. CHUGIAK, ALASKA 99567			DWG: PETER J. MAUS	CHECK: CJW	APPROVED: DICK ROBERTS JR.		DRAWING NUMBER 8400
					DATE: 08-01-2004	DATE: 03-13-08	DATE: 03-13-2008		