



Document Number: Install Instructions

Aircraft: PA-18 Series with 3” extended landing gear

Project: Light Weight Landing Gear Safety Ropes

Release Number: IR

Release Date: 09/20/2019

Prepared for:

**Airframes Alaska, LLC
81 East Commercial Drive
Palmer, AK 99645**

LOG OF REVISIONS

Rev Level	Date	Change Description	Approved
IR	September 20, 2019	Initial Release	

For current revision of this manual, please contact the manufacturer.

Airframes Alaska, LLC
81 East Commercial Drive
Palmer, AK 99645
(907)-331-4480
info@airframesalaska.com
www.airframesalaska.com

REFERENCE

Aircraft Inspection, Repair, and Alterations AC 43.13: Acceptable Methods, Techniques and Practices.

1.0 INTRODUCTION

This document presents installation instructions as required for Supplemental Type Certificate. Installation of this STC should be accomplished by an A&P or equivalent. Workmanship should be of the aircraft industry standard using AC 43.13-1B as a reference and guide.

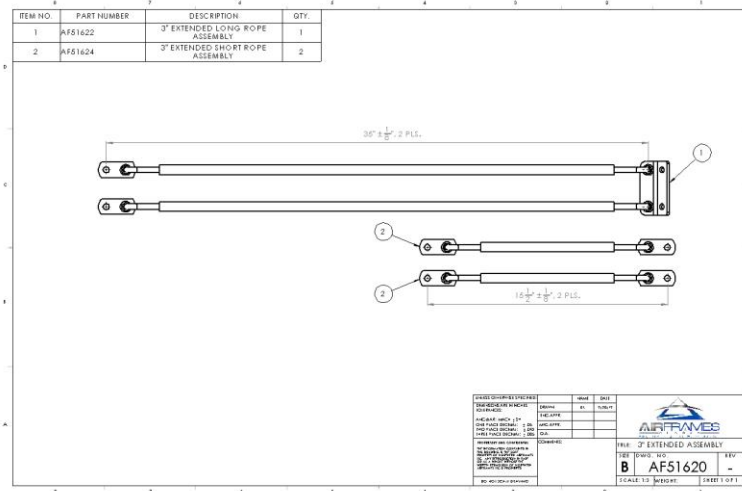
STC TBA covers the following PA-18 model Aircraft equipped with 3” extended main landing gear, including wide-body variants.

TCDS	PA-18 Models
1A2	PA-18, PA-18S
1A2	PA-18 (105)
1A2	PA-18S (105)
1A2	PA-18A
1A2	PA-18 (125)
1A2	PA-18S (125)
1A2	PA-18 (135)
1A2	PA-18A (135)
1A2	PA-18S (135)
1A2	PA-18AS (135)
1A2	PA-18 (150)
1A2	PA-18A (150)
1A2	PA-18S (150)
1A2	PA-18AS (150)
1A2	PA-19
1A2	PA-19S

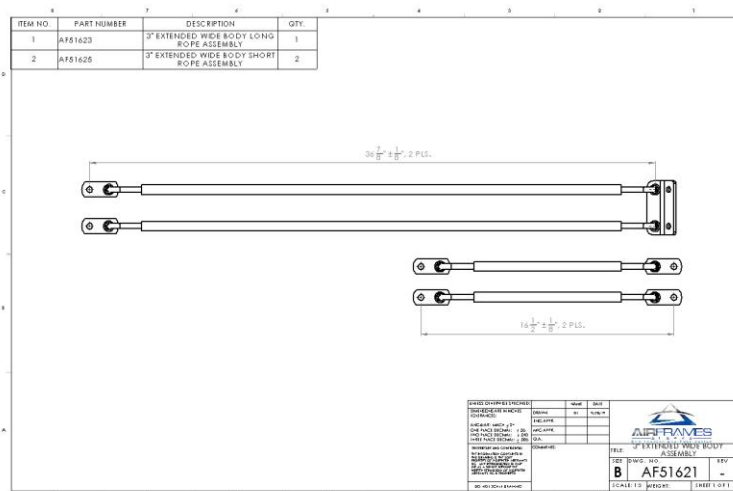
2.0 INSTALLATION

Please read all instructions prior to beginning work.

See the drawings below to ensure you have the correct light weigh landing gear safety cable assemblies (for standard width aircraft):

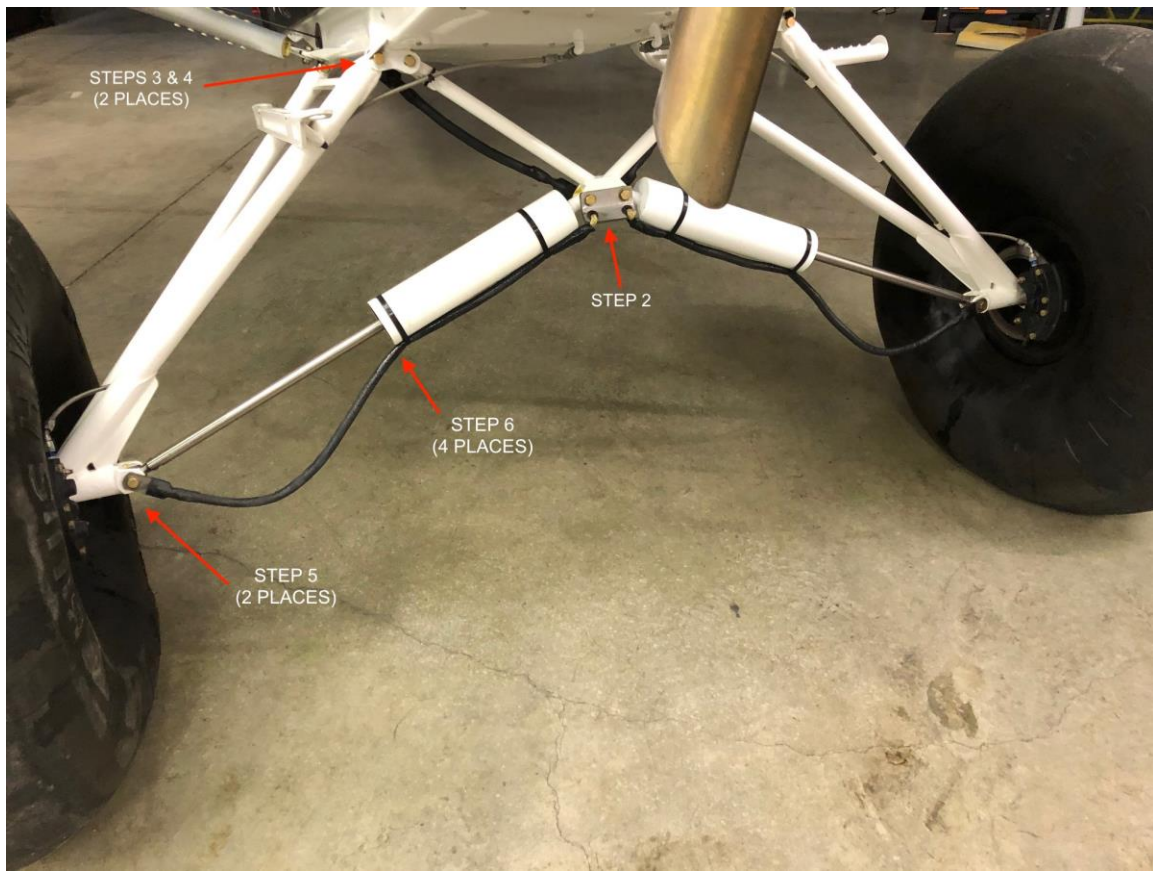


For wide-body aircraft:



1. Raise and support the fuselage with the main wheels just clear of the ground. Use extreme caution
2. Remove the two (2) AN6 bolts where the hydrosorb units attach to the center of the cabane vee. Attach the lower rope assembly attachment plate to the forward side of the cabane using two (2) new AN6-21A bolts through the existing holes in the attachment plate, cabane and hydrosorbs (bolt heads facing forward). Slide

- one attachment link of each upper rope assembly over the protruding (AFT) end of each new AN6-21A bolt. Then install a nut and washer on each bolt.
3. Remove the nut and washer from the left main gear forward attachment bolt. Slide the link at the free (upper) end of the left upper rope assembly over the AFT end of the bolt, then install a nut and washer. Attach the right upper rope in the same manner to the AFT end of the right main forward attachment bolt.
 4. Adjust the brake lines as necessary to eliminate any interference with the safety rope hardware.
 5. Remove the nut, washer, and bolt where the left shock strut assembly attaches to the axle inboard end. Attach the link at the free (lower) end of the left lower rope to the forward side of the axle using an AN6-22A, or AN6-23A for 1-1/2" axles. Place the bolt through the link, axle, and shock strut (bolt head forward). Install a new nut and washer on the bolt. Attach the right lower rope to the right axle/strut in the same manner.
 6. Tie the lower safety rope to the shock strut as shown in the sketch. Nylon tyloks (at least 3/16" inch wide).



3.0 Weight and Balance

Change in the weight and balance information will vary with aircraft.

Added weight of the Landing Gear Safety Rope Assembly: 1.5 Lbs.

STC # TBD

Airframes Alaska LLC

Piper PA-18 Light Weight Landing Gear Safety Rope Installation Instructions Page 6 of 6

The Landing Gear Safety Rope Assembly is located 2.25 inches aft of the wing's leading edge.

Make appropriate changes in aircraft logs.

*****END*****